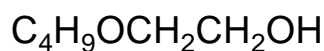




Butyl CELLOSOLVE

Ethylene Glycol Monobutyl Ether



A fast-evaporating glycol ether with an excellent balance of hydrophilic and hydrophobic character; excellent active solvency and coupling properties

Introduction

Butyl CELLOSOLVE™ glycol ether is a very versatile solvent product with a good balance of many different properties. With a nearly equal balance of hydrophobic and hydrophilic character, Butyl CELLOSOLVE glycol ether provides excellent performance in coatings, cleaners, and many other types of products. It is one of our fastest-evaporating glycol ethers. Butyl CELLOSOLVE glycol ether is compatible with a wide range of resin types, and it also offers 100% water solubility.

Physical properties†

Molecular weight (g/mol)	118.2	
Boiling point @ 760 mmHg, 1.01 bar	340°F	171°C
Flash point	149°F	65°C
Freezing point	-107°F	-77°C
Vapor pressure @ 20°C — extrapolated	0.66 mmHg 0.89 mbar	
Specific gravity (25/25°C)	0.901	
Density @ 20°C	7.53 lb/gal	0.902 g/cm ³
@ 25°C	7.49 lb/gal	0.898 g/cm ³
Viscosity (cP or mPa.s @ 25°C)	2.9	
Surface tension (dynes/cm or mN/m @ 25°C)	27.4	
Specific heat (J/g°C @ 25°C)	2.38	
Heat of vaporization (J/g) at normal boiling point	348	
Net heat of combustion (kJ/g) — predicted @ 25°C	30.0	
Autoignition temperature	471°F	244°C
Evaporation rate	(n-butyl acetate = 1.0) (diethyl ether = 1.0)	0.079 154
Solubility, g/100 g @ 25°C		
Solvent in water	∞	
Water in solvent	∞	
Hansen solubility parameters (J/cm ³) ^{1/2}		
δ _d (Dispersion)	16.0	
δ _p (Polar)	5.1	
δ _h (Hydrogen bonding)	12.3	
Flammable limits (vol.% in air)		
Lower (measured @ 170°C)	1.13	
Upper (measured @ 180°C)	10.60	

† The physical property data listed here are considered to be typical properties, not specifications.

Classification/Registry Numbers††

CAS Number	111-76-2
AICS (Australia)	111-76-2
DSL (Canada)	111-76-2
ECL (Korea)	2-519
EINECS (EU)	203-905-0
MITI (Japan)	2-407
TSCA (U.S.)	111-76-2

†† **NOTE:** Classifications apply only to this glycol ether product. It is the responsibility of the formulator to ensure that the final finished product complies with the regulations of a given country prior to its sale or distribution in that country.

(Please see reverse side)

Butyl CELLOSOLVE

Ethylene Glycol Monobutyl Ether

Suggested applications

- Active solvent for solvent-based coatings.
- Coalescent for industrial water-based coatings.
- Coupling agent for architectural water-borne coatings.
- Coupling agent and solvent in household and industrial cleaners, rust removers, hard surface cleaners, and disinfectants.
- Primary solvent in solvent-based silk screen printing inks.
- Coupling agent for resins and dyes in water-based printing inks.
- Solvent for agricultural pesticides.

Features

- Powerful solvency
- Coupling ability
- Coalescing ability
- Moderate evaporation rate
- High dilution ratio
- Wide range of applications

NOTE: Consult the appropriate Material Safety Data Sheet for safety and handling guidelines for this product.

The Dow Chemical Company
Midland, Michigan 48674 U.S.A.

In The United States And Canada: 1-800-447-4369; Fax: 1-989-832-1465
In Europe: +800 3 694 6367; Toll Phone: +32 3 450 2240; Toll Fax: +32 3 450 2815
In The Pacific: +852 2879 7260; Fax: +852 2827 5881
In Other Global Areas: 1-989-832-1556; Fax: 1-989-832-1465

Notice: No freedom from any patent owned by Seller or others is to be inferred. Because use conditions and applicable laws may differ from one location to another and may change with time, Customer is responsible for determining whether products and the information in this document are appropriate for Customer's use and for ensuring that Customer's workplace and disposal practices are in compliance with applicable laws and other governmental enactments. Seller assumes no obligation or liability for the information in this document. NO WARRANTIES ARE GIVEN; ALL IMPLIED WARRANTIES OF MERCHANTABILITY OR FITNESS FOR A PARTICULAR PURPOSE ARE EXPRESSLY EXCLUDED.

Published August 2001

